

DRC

RAINBIRD 1000

PZ23-12000001
04/03/2024

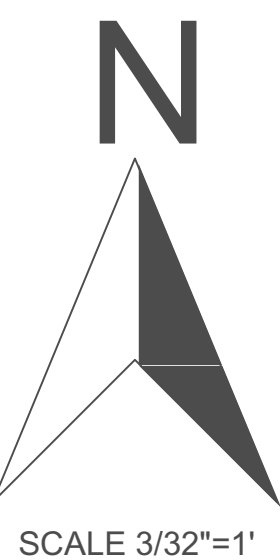
EnviroScapes

4132 SW 51st Street
Dania Beach FL

NEW MULTI FAMILY RESIDENCE

1300 RIVERSIDE DRIVE
POMPANO BEACH FL

DRAWN BY:
CHECKED BY:
JOB NUMBER: 1300 R
DATE: 1/31/2024



Digitally signed by
Hugh Johnson
Date: 2024.02.14
08:13:01 -05'00'

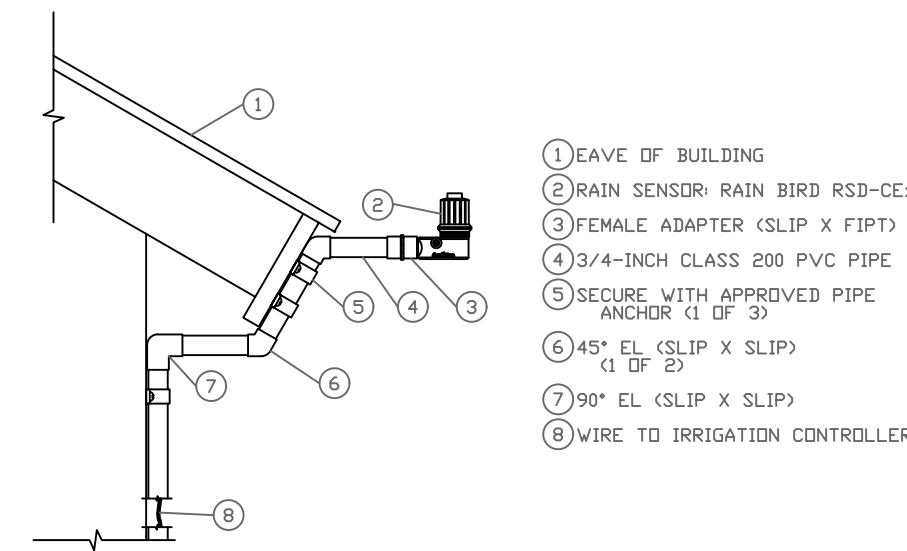
IR-1

IRRIGATION LEGEND

- 1" PVB VALVE
- WM WATER METER
- RAINBIRD RAIN SENSOR
ATTACHED TO CONTROLLER
- RAIN BIRD TIMER
- JB JUNCTION BOX
W. WATERPROOF CONNECTORS
- 1" PVC MAIN SUPPLY LINE SCH 40
- LATERAL LINE (SCH.160)
- PIPE IN SLEEVE
- 1" ELECTRIC VALVES-RAINBIRD PEB SERIES
OR APPROVED EQUAL. IN 10" VAVLE BOX
- ZONE 2
2 GPM
1" VALVE
- ZONE DESIGNATION

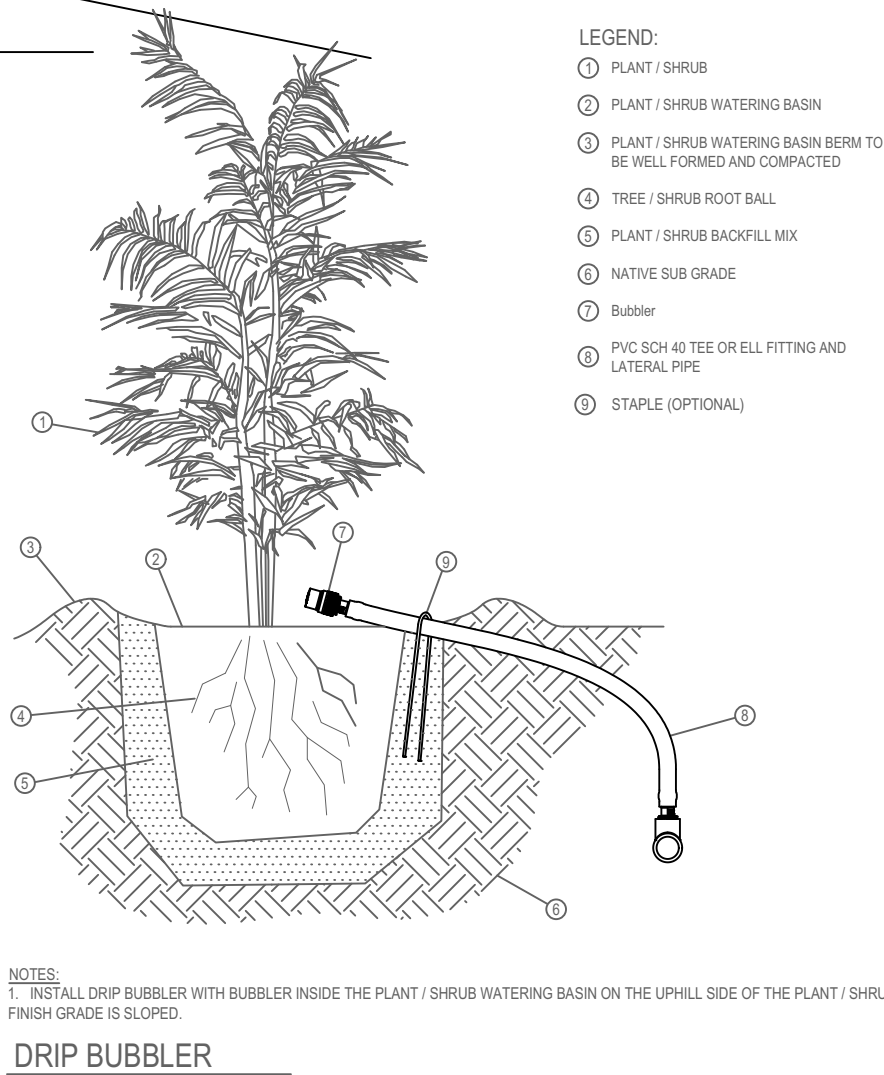
- RAINBIRD 1000
- FULL
- THREE QUARTER
- HALF
- ONE QUARTER
- Bubbler
- CENTER STRIP
- PIPE SIZE
- END STRIP
- DRIP STRIP

Rain Sensor



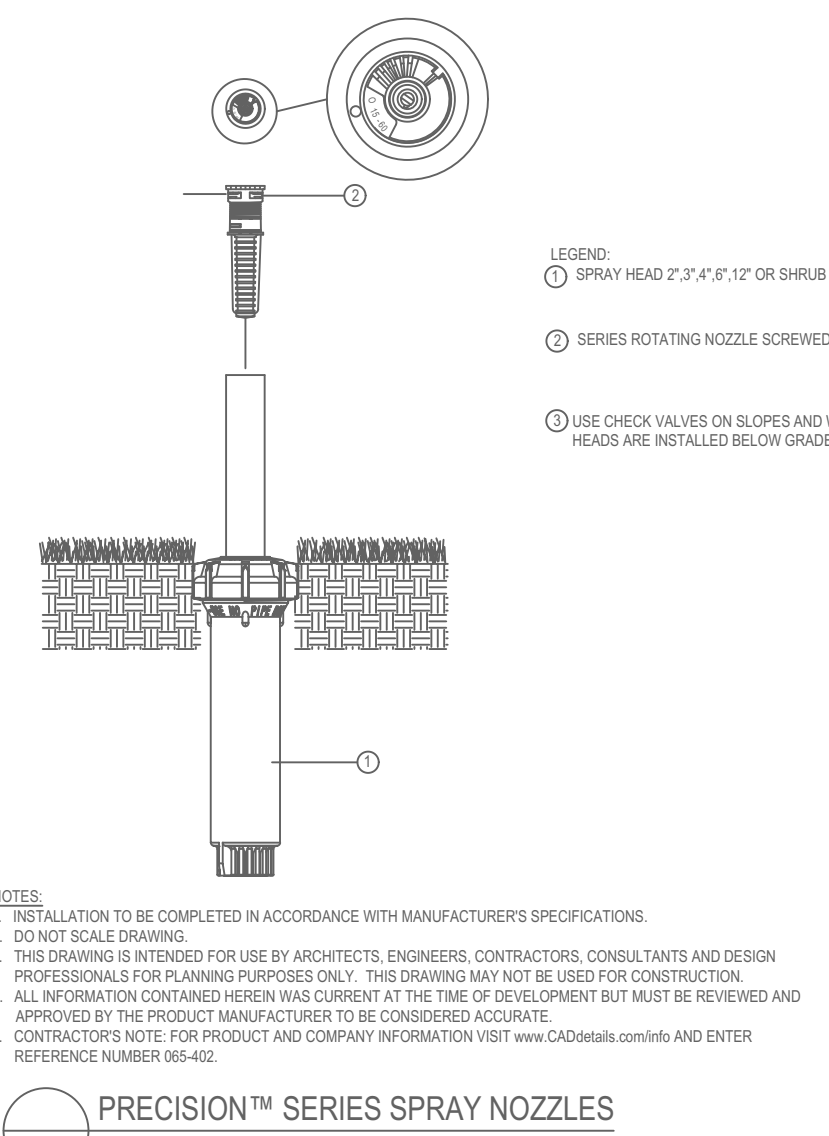
RAIN SENSOR
N.T.S. RSD-CEx ROOF CONDUIT
C-RSD-CEx ROOF CONDUIT(200)

Bubbler

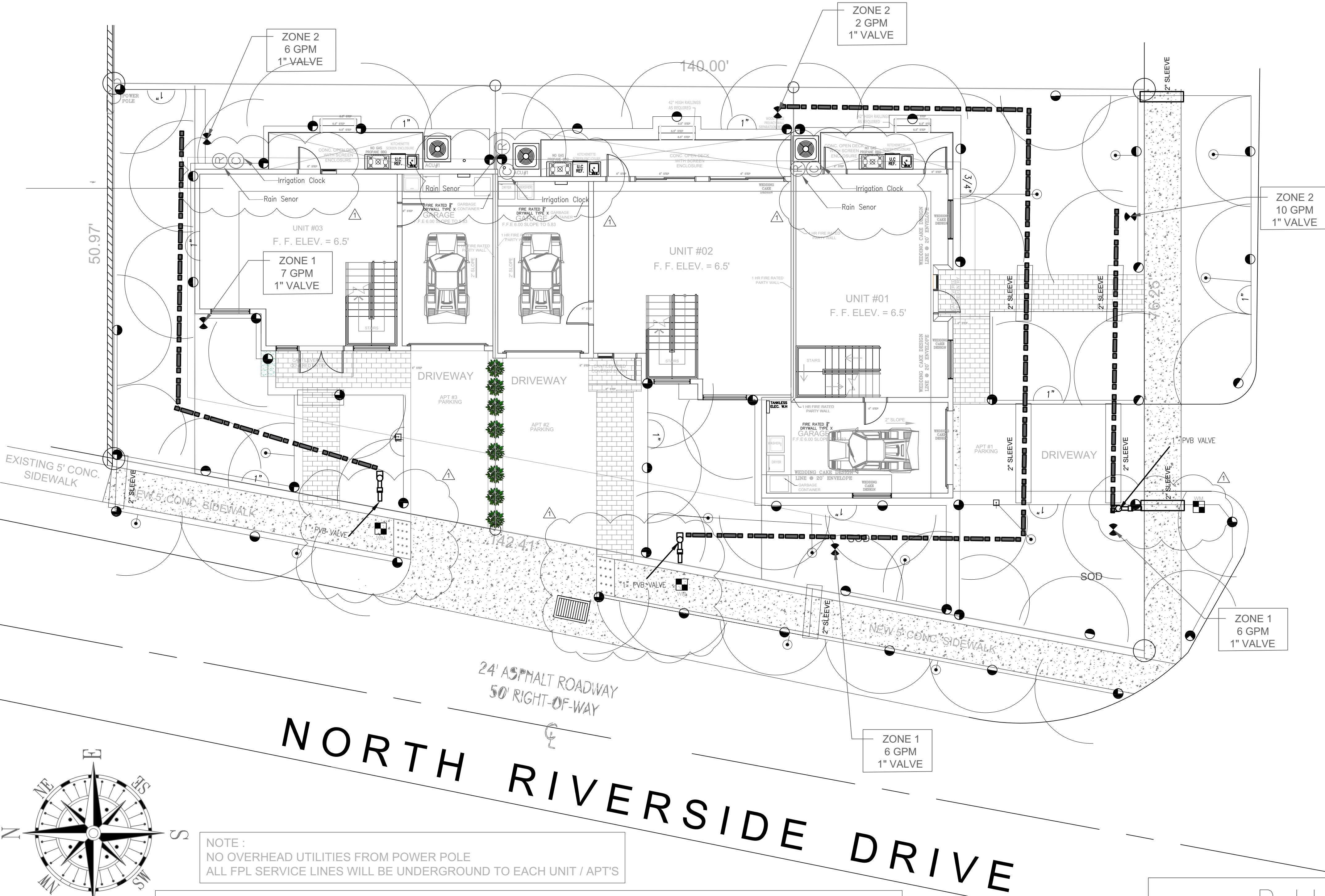


NOTES:
1. INSTALL DRIP BUBBLER WITH BUBBLER INSIDE THE PLANT / SHRUB WATERING BASIN ON THE UPHILL SIDE OF THE PLANT / SHRUB, IF FINISH GRADE IS SLOPED.
D RIP BUBBLER

Pop-Up Sprinkler



NOTES:
1. INSTALLATION TO BE COMPLETED IN ACCORDANCE WITH MANUFACTURER'S SPECIFICATIONS.
2. DO NOT SCALE DRAWING.
3. THIS DRAWING IS INTENDED FOR USE BY ARCHITECTS, ENGINEERS, CONTRACTORS, CONSULTANTS AND DESIGN PROFESSIONALS FOR PLANNING PURPOSES ONLY. THIS DRAWING MAY NOT BE USED FOR CONSTRUCTION.
4. ALL INFORMATION CONTAINED HEREIN WAS CURRENT AT THE TIME OF DEVELOPMENT BUT MUST BE REVIEWED AND APPROVED BY THE PRODUCT MANUFACTURER TO BE CONSIDERED ACCURATE.
5. CONTRACTOR'S NOTE: FOR PRODUCT AND COMPANY INFORMATION VISIT www.CalOdega.com/info AND ENTER REFERENCE NUMBER 96-402.
PRECISION™ SERIES SPRAY NOZZLES

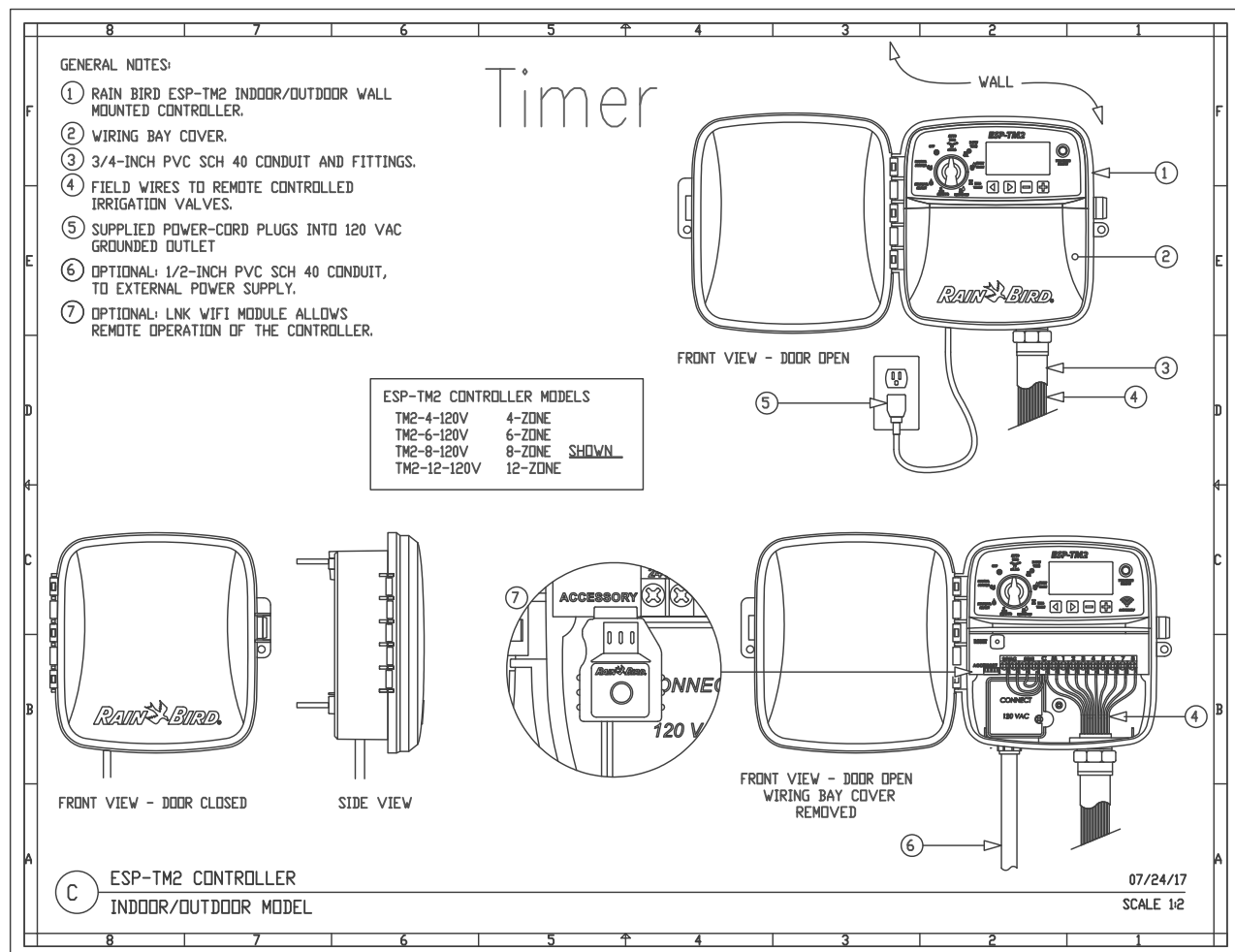


NOTE :
NO OVERHEAD UTILITIES FROM POWER POLE
ALL FPL SERVICE LINES WILL BE UNDERGROUND TO EACH UNIT / APT'S

FBC A206.2.1
SITE ARRIVAL POINTS SHALL BE PROVIDED AT LEAST ONE ACCESSIBLE ROUTE SHALL BE WITHIN THE SITE FROM ACCESSIBLE PARKING SPACES COMPLYING WITH FBC A502 AND ACCESSIBLE PASSENGER LOADING ZONES COMPLYING WITH FBC A209;

IRRIGATION NOTES:

- The developer shall schedule a preconstruction meeting with the public works department plumbing inspector via the engineering department inspector prior to the commencement of the irrigation work. The developer, its Landscape architect, and its landscape contractor shall attend the meeting. the meeting shall be at a time and place acceptable to the inspector. the developer shall provide the landscape inspector with the contact information for its landscape architect, project manager, superintendent, and irrigation and landscape contractor at the meeting.
- Developer shall submit a complete materials list and associate catalogue cuts for all manufactured materials to be incorporated in the work to the public works department prior to start of construction. the submittal shall be in bound form.
- The work shall be constructed in accordance with the developers city approved plans, the city's irrigation and landscape standard drawings, the city approved irrigation and landscape materials list, the standard specification for public works construction, and these standards irrigation notes.
- Review and approval of the developers plans by the city does not warrant that the plans are accurate and complete. The developer is solely responsible for accuracy and completeness of this drawing.
- Irrigation plans are diagrammatic. The actual location of irrigation improvements shall be in planted areas where possible. Location of irrigation improvements are subjected to public works department approval prior to installation. Irrigation controllers shall be installed "outside" of irrigation coverage.
- All threaded fitting require Teflon tape.
- Above ground irrigation system are not permitted.
- Control wiring shall be color coded and labeled at the controller and all junctions.
- All trees and palms will have bubblers.
- Dedicated water and electrical services shall be provided for all irrigation systems and controllers. Contractor shall verify and coordinate locations of irrigation water services and irrigation controller electrical service location with other trades to ensure they correspond with irrigation water points of connection and controller location. Electrical and water feeds from private source are not allowed.
- Code Section 54.04 CONNECTION REQUIRED. (A) Where available, the owner of every lot or parcel of land within the city utility service district developed for public, commercial, office, industrial, warehousing and/or multifamily use(s) shall connect or cause to be connected, with the reclaimed water distribution system.
- The irrigation system shall be properly maintained in good working order and provide a minimum coverage of 100 percent with 50 percent overlap.



ESP-THE CONTROLLER MODELS
TMC-4-120V 4-ZONE
TMC-8-120V 8-ZONE
TMC-12-120V 12-ZONE
ESP-THE CONTROLLER
INDOOR/OUTDOOR MODEL
07/24/17
SCALE 1/2"